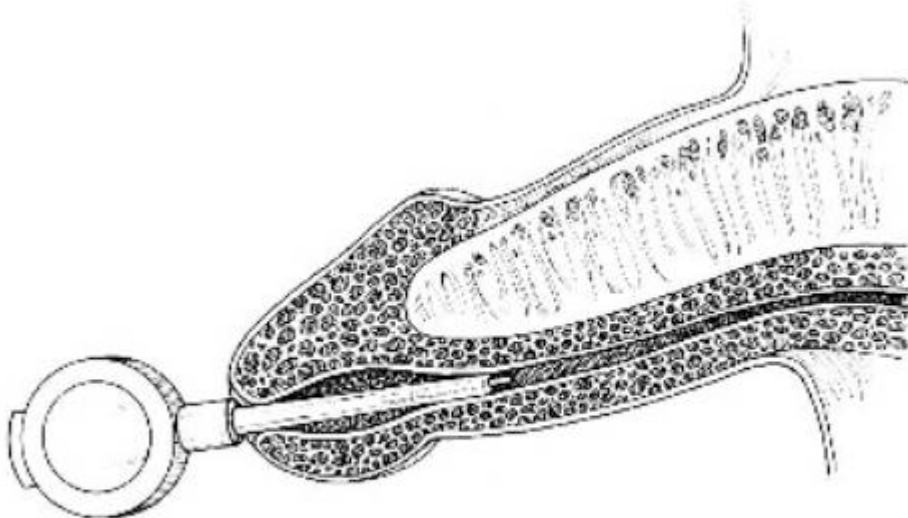
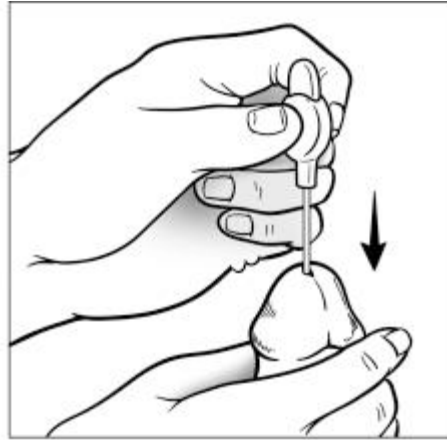
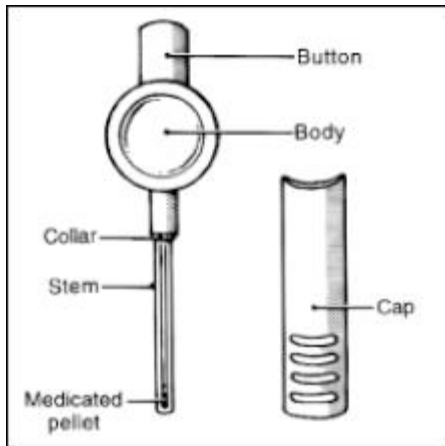


## MUSE



- Consists of applying a prostaglandin pellet into the urethra
- Prostaglandin causes vasodilatation of the penile corporal bodies leading to subsequent erection
- **Advantage**
  - Simple and safe
- **Disadvantage**
  - Low efficacy (only 40% success rate)
  - Lack of consistency
  - Cost
  - Pain